

WOODWIND TEACHER

A BRIEFING PAPER FOR
APPLICANTS

MAY 2025

CITY OF WOLVERHAMPTON COUNCIL – AN OVERVIEW

The Music Service sits within the Children's and Families Directorate within the City of Wolverhampton Council.

It works alongside colleagues in a department entitled Educational Excellence. This covers school improvement, early years, school performance, insight and citizenship, language and learning, SEND and Public Health.

The City of Wolverhampton Council has a council plan and ambition through to 2030 available [HERE](#)

Further insight into the city's population, demographics and challenges can be accessed [HERE](#)

OUR CITY, OUR PLAN

Working together to be a city of opportunity, a city for everyone and deliver our contribution to Vision 2030

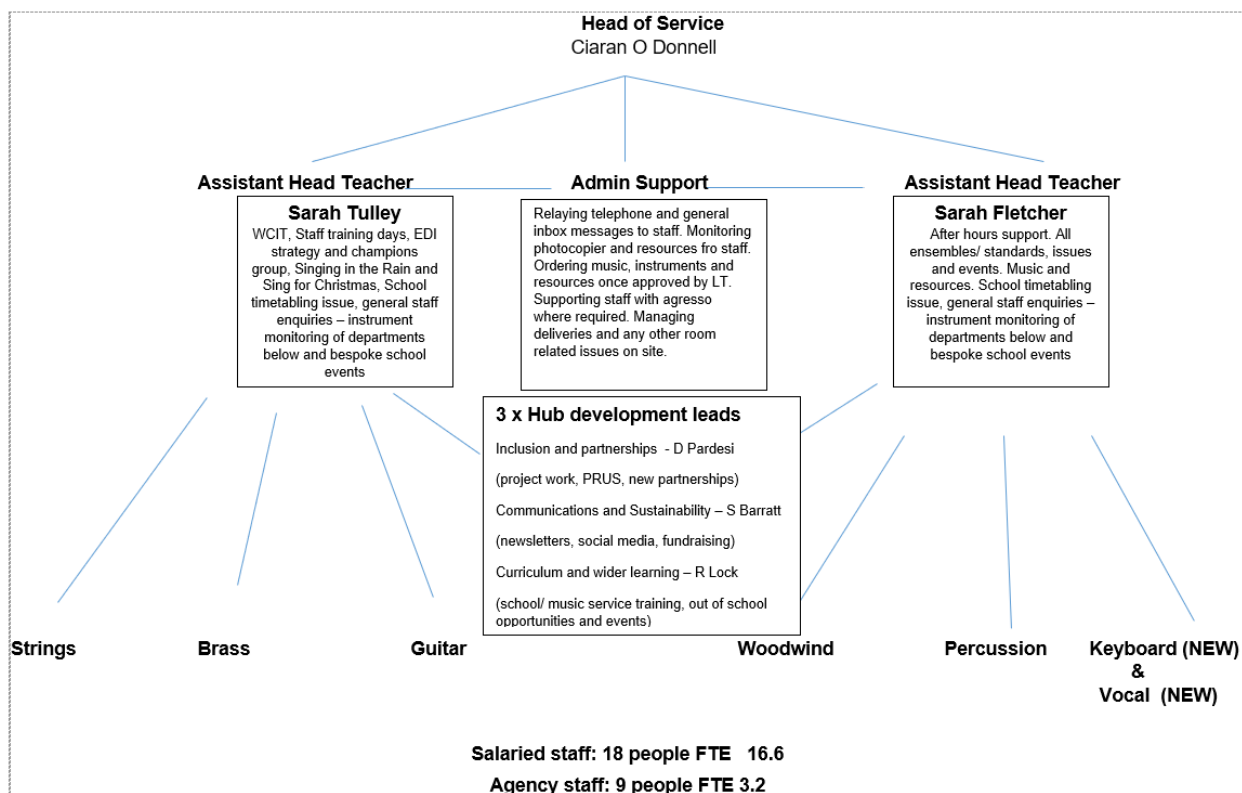


THE MUSIC SERVICE

BACKGROUND

- The Music Service has an establishment of approximately 21 FTE.
- Currently 36 individuals are employed.
- From September 2024 the Music Service became a lead delivery partner in the new Black Country Music Hub across Dudley, Sandwell, Walsall and Wolverhampton. Dudley Metropolitan Council leads this new multi area hub. This wider regional hub builds upon the work of our [Local Plan for Music Education](#).
- We derive our income from two principal sources – traded income from schools (£950k) and the Music Education Hub Grant (£458k) to support the Black Country Music Hub.
- The Music Hub delivers activity to support and enhance the aims outlined in the [National Plan For Music Education](#)
- We publish an annual brochure of services to support schools - available [HERE](#)

STRUCTURE



TEACHING

- Teachers visit schools on a weekly basis teaching pupils the musical skills identified with playing an instrument or singing. In excess of 450 visits are made each week supporting more than 7,000 pupils in over 90 schools. The pupils are taught in whole classes, small groups and individually. The comprehensive range of instruments available includes orchestral, brass band, guitar, keyboard, south Asian, jazz, percussion and voice. The Music Service bases its work on [A Common Approach](#) (revised in 2022), the national scheme of work developed by the Federation of Music Services and Music Mark.
- The Music Service has a commitment to quality, in terms of employing only appropriately qualified and experienced teachers supported with comprehensive Professional Development, and to equality of opportunity, in terms of lending a free instrument to all pupils learning. This means that the Music Service has a large income target to generate through trading with schools – c. £950,000 per year. The Music Service has consistently covered its costs each year.
- The Music Service works through schools and makes no requirement on those schools to charge for tuition. Whilst many individual Governing Bodies have chosen to do so, a number of schools continue to provide lessons completely free of charge.

THE BLACK COUNTRY MUSIC HUB/ MUSIC SERVICE

Currently, the Black Country Music Education Hub (BCMH) is in its initial year of development. It is led by Dudley Metropolitan Council. There is good working relationships in the new hub and some successful joint working between the partners to date. Joint training events with the combined Black Country workforce are being planned into 2025/26 and some larger project based activity is also in development.

Wolverhampton Music Service is a Local Authority Music Service with over 70 years' experience working in partnership with the city's schools. It is a strong learning organisation with a track record of evidence-based development. The Music Hub benefits from integration with the Local Authority operationally and through the city-wide intelligence the Local Authority has on its schools, their trends and overall challenges.

The Music Service still operates services with a number of local partners to deliver activity that supports the implementation of the National Plan for Music. There is now a subsidised entitlement to services for all schools:

- **Charanga Music School (curriculum support):** This digital software is offered to all primary and special settings at no cost.
- **Charanga/ Music First Technology Bundle(curriculum support):** This digital software is offered to all secondary schools at no cost.
- **Paul Wilcox (Events and Opportunities):** subsidised curation of large-scale singing events at Christmas and in Summer.
- **Music Service (Instrumental learning):** Fully subsidised instrumental loan for all schools when trading with the Music Service.
- **Music Service (Instrumental learning):** Fully subsidised ensemble system for young people to engage in group music making across 15 out of school groups.
- **Music Service (curriculum support):** Fully subsidised provision of networks and in person/online training in schools.
- **Music Service (Instrumental learning):** Secondary schools receive first hour at 50% reduction to support affordability in progression from primary to secondary.
- **Inclusic Music Ltd (Events and Opportunities):** Fully subsidised Easter and Summer holiday course for rock and pop musicians.
- **Music Service (Events and Opportunities):** Fully subsidised large-scale orchestral concerts and an annual concert series for beginners (sound series), advanced players (recital evenings) and performance events for members of the 15 progressive ensembles.

We also have ambitious plans for development. The high levels of school engagement mask some challenges that we are working hard to address. These include:

- Implementing a better overall management structure that enables capacity to develop priorities and manage new partnership activity.
- Ensuring that numbers within the ensemble system grow so that authentic ensembles experiences are maintained.
- Developing a strong and meaningful response to our Equity, Diversity and Inclusion work, including the presence of Youth Voice/ consultation within the Hub's governance structure.
- Ongoing financial viability of lead organisation against school budget pressure and employee costs.
- Launch of a new out of school offer for children/ adults.
- Development of EYFS teaching.
- The need to bolster the hub finances through new income generation and fundraising.
- Greater urgency in the communications, customer journey and marketing of our work in the post-covid world.
- Support for school's curriculum development in response to the Model Music Curriculum, [the Ofsted subject review](#) and the refreshed [National Plan for Music Education](#).

ENGAGEMENT

Many of our events and opportunities are collated on our [Youtube Channel](#)

Advice and guidance for schools is offered through our [website](#)

Our full offer for schools is available in our [Brochure of Services](#).

The offer is comprehensive and leads to high levels of engagement in the work of the Music Service.

Schools by type	Total number of schools	Music Service weekly support in 24-25	Other engagement through the Music Hub
Primary & Infant	70	62	70
Secondary	19	18	19
All Through (The Royal School)	1	1	1
16 plus (CoWC)	1	0	0
Special Schools	8	4	6
Pupil Referral Unit	4	0	0
Total	103	85	97

APPLICATION

The Ideal candidate will have relevant instrumental teaching experience, specialising on clarinet and be able provide tuition on a range of other woodwind instruments. We particularly welcome applications from those able to support the teaching of double reed instruments.

Applications are welcome from qualified and unqualified teachers.

Closing date for applications, Midnight, Tuesday 13th May 2025.

Shortlisted Candidates will be invited to interview on the afternoon of Friday 16th May 2025.